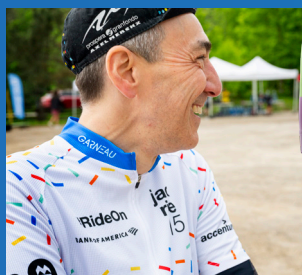




GARNEAU CUSTOM 2025



UNITE
ATHLETES.
STRENGTHEN
TEAMS.

— GARNEAU^C



GARNEAU[®]

Having been in the business since 1984, Louis Garneau has nearly 40 years of experience making your custom clothing ideas a reality.

We guarantee the quality of our products. Our development team works closely with top athletes and cycling enthusiasts to design cutting-edge performance apparel that combines functionality and comfort. From our offices in Quebec and Vermont, our graphic specialists and dedicated customer service team are here to bring your custom project to life and support you every step of the way.



Team La Boucle 2024

Your ideas, our solution.

From the placement of logos and the choice of your colors to the final adjustments – our team is here to help you.

THE RIGHT PRODUCT

Our custom specialists are there every step of the way, from helping you choose the right product for your activity up until it arrives at your door.

BRING YOUR IDEAS TO LIFE

Bringing your custom apparel ideas to life is easy with low minimums, personalized service, and a fast turnaround (most orders ship twenty business days after design approval).

DESIGN GOALS

Whether you're organizing an event, representing a team or club, a company or simply a group of friends looking for original outfits, we tailor our approach to your needs, your ideas and your schedule.



ROAD



PREMIUM SS JERSEY



SLIM FIT

GTOP0301 ♂ **GTOP0302** ♀
(2XS-3XL) (XS-2XL)



STANDARD FIT

GTOP0303 ♂ **GTOP0304** ♀
(2XS-3XL) (XS-3XL)



FABRICS

• AIRDRY 100 • AIRFIT MESH • MONDO

FEATURES

- Airdry 100 front and back, light, breathable with a shiny look that optimizes sublimation.
- AirFit mesh side panels for maximum ventilation and great stretch.
- Mondo sleeves which are super light and stretchy.
- Full length hidden zip.
- Aero lazer style finish at sleeves.
- Silicon gripper at hem that holds in place even in action.
- LYCRA fiber sleeves.
- 2 easy-to-access side pockets (STD fit only).
- 3 back pockets with reflective accents.

GRANFONDO SS JERSEY



STANDARD FIT

GTOP0307 ♂ **GTOP0308** ♀
(2XS-4XL) (XS-3XL)



FABRICS

• AIRDRY 100

FEATURES

- Made of Airdry 100, a light and breathable fabric.
- Full length hidden zip.
- Elastic at hem.
- 3 back pockets with reflective accents.

PREMIUM LS JERSEY



STANDARD FIT

GTOP0309 ♂ **UNISEX**
(2XS-4XL)

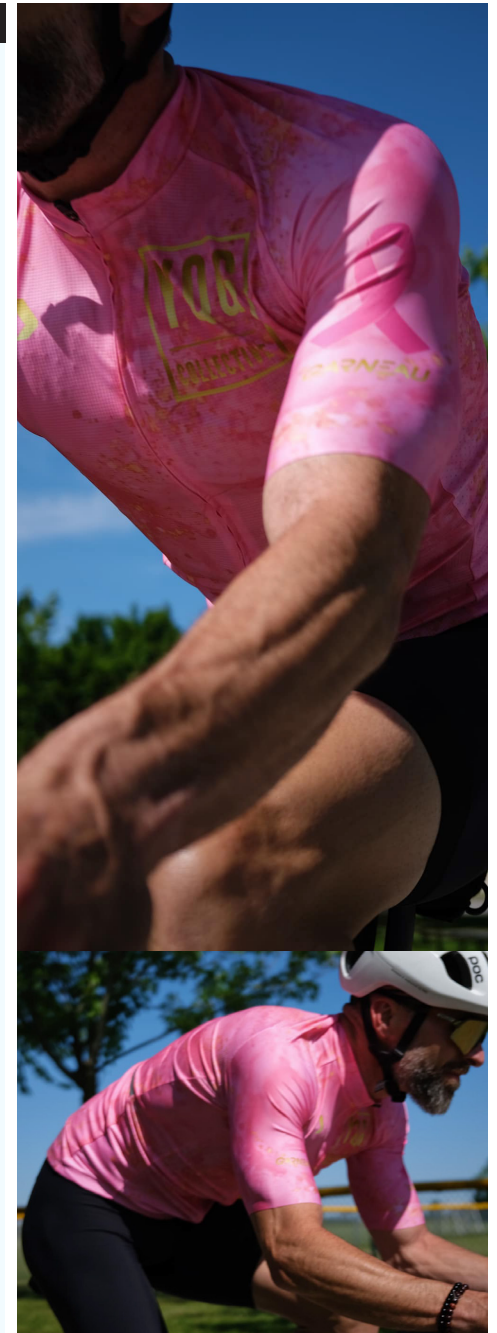


FABRICS

• AIRDRY 100

FEATURES

- Airdry Brush at front, back and sleeves. Fabric designed to enhance moisture wicking and freedom of movement.
- Zircon side panels for more comfort and ease of movement.
- Full length hidden zip.
- Silicon gripper at hem that holds in place even in action.
- 2 easy-to-access side pockets.
- 3 back pockets with reflective accents.





PREMIUM PACER BIB



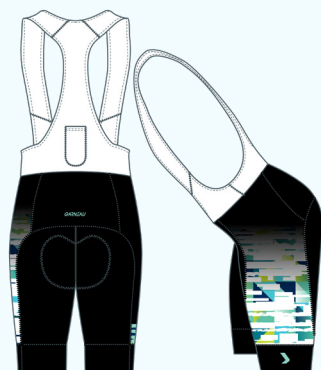
5.1 MOTION PULSE

GBOT0241 ♂ **GBOT0242** ♀
(XS-2XL) (XS-2XL)



4.1 MOTION

GBOT0297 ♂ **GBOT0298** ♀
(XS-2XL) (XS-2XL)



FABRIC

- POWER + LYCRA® FIBER
- PRO + LYCRA® FIBER • POWER MESH

FEATURES

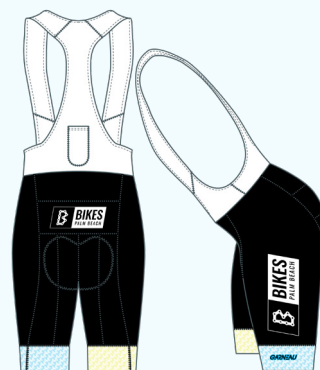
- Seamless inner leg to minimize friction and reduce chafing. Other seams are Flatlock seams.
- Laser-style thigh finish with grip.
- Power Mesh straps available in black or white.
- Excellent support for muscles.
- 5.1 Motion chamois designed for long rides with extra front padding for aero position on the saddle.
- 4.1 Motion chamois is made from recycled fibers. Vented, versatile, comfortable and our team's favourite.
- Inseam*: 10.5"/26.5 cm (Men), 9.5"/24 cm (Women).

PREMIUM BIB



NEW AIRGEL

GBOT0243 ♂ **GBOT0244** ♀
(XS-3XL) (XS-2XL)



FABRIC

- ULTRA SIGNATURE • PRO + LYCRA® FIBER
- POWER MESH

FEATURES

- Ultra signature base.
- Power mesh straps.
- Power band compressive cuff that reduces pressure and won't restrict blood flow.
- Flatlock seams to minimize friction and reduce chafing.
- Inseam*: 9.25"/23.5cm (Men), 8.5"/21.5cm (Women).

FONDO SHORTS



AIRZONE

GBOT0245 ♂ **GBOT0246** ♀
(XS-3XL) (XS-2XL)



FABRIC

- ULTRA SIGNATURE
- PRO + LYCRA® FIBER

FEATURES

- Ultra signature base.
- Power band compressive cuff that reduces pressure and won't restrict blood flow.
- Flatlock seams to minimize chafing and eliminate irritation.
- Inseam*: 9.25"/23.5cm (Men), 8.5"/21.5cm (Women).





MODESTO JACKET



STANDARD FIT

GTOP0310 ♂ GTOP0311 ♀
(2XS-3XL) (XS-2XL)



FABRIC

• MICROZONE II • COOL MESH LITE

FEATURES

- Cool Mesh Lite stretch side panels and pockets for moisture management and freedom of movement.
- Microzone provides great wind protection.
- Wind, water, stain and tear resistant.
- Full length zip with garage and inner flap.
- Gripper at hem.
- Packable.
- 2 easy-to-access side pockets.
- 3 back pockets with reflective accents.

NOVA VEST



STANDARD FIT

GTOP0312 ♂ UNISEX
(2XS-3XL)



FABRIC

• MICROZONE II • COOL MESH LITE

FEATURES

- Cool Mesh Lite stretch side panels and pockets for moisture management.
- Reflective accents at shoulders and back gripper.
- Microzone provides great wind protection.
- Wind, water, stain and tear resistant.
- Full length zip with garage and inner flap.
- Gripper at hem.
- Packable.
- 2 easy-to-access side pockets.
- 3 back pockets with reflective accents.



MTB





SOMBRIO SS JERSEY



STANDARD FIT

BTOP0074 ♂ **BTOP0071** ♀
(XS-2XL) (XS-2XL)



FABRIC

• COOL WIK LITE

FEATURES

- This jersey is the ultimate customizable base unit designed with a classic raglan sleeve and silky smooth Cool Wik Lite fabric to wick moisture away from the body. Just add your custom graphics and go!
- Raglan sleeve design.
- Moisture wicking finish.
- Drop back hem.

SOMBRIO LS JERSEY



STANDARD FIT

BTOP0069 ♂ **BTOP0072** ♀
(XS-2XL) (XS-2XL)



FABRIC

• COOL WIK LITE

FEATURES

- Designed to wick moisture away from the body, this jersey is built with a raglan sleeve and a women-specific fit is available, ready for you to customize!
- Raglan sleeve design.
- Moisture wicking finish.
- Drop back hem.

SOMBRIO SS JUNIOR JERSEY



STANDARD FIT

BTOP0077 ♂ ♀ UNISEX
(JRXS-JRXL)

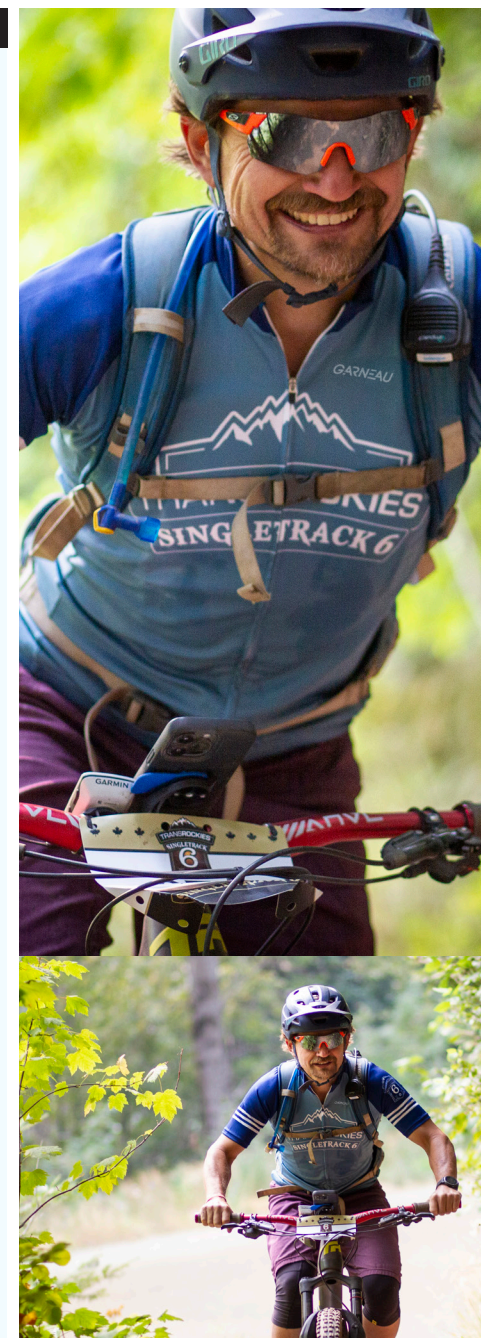


FABRIC

• COOL WIK LITE

FEATURES

- This jersey is the ultimate customizable base unit designed with a classic raglan sleeve and silky smooth Cool Wik Lite fabric to wick moisture away from the body. Just add your custom graphics and go!
- Raglan sleeve design.
- Moisture wicking finish.
- Drop back hem.



JUNIOR





JUNIOR PREMIUM JERSEY



STANDARD FIT

GTOP0313 UNISEX
(JRXS-JRXL)

JUNIOR



TISSUS

- AIRDRY 100 • AIRFIT MESH
- MONDO

FEATURES

- Airdry 100 front and back, light, breathable with a shiny look that optimizes sublimation.
- AirFit mesh side panels for maximum ventilation and great stretch.
- Mondo sleeves which are super light and stretchy.
- Full length hidden zip.
- Aero lazer style finish at sleeves.
- Silicon gripper at hem that holds in place even in action.
- LYCRA fiber sleeves.
- 2 easy-to-access side pockets.
- 3 back pockets with reflective accents.

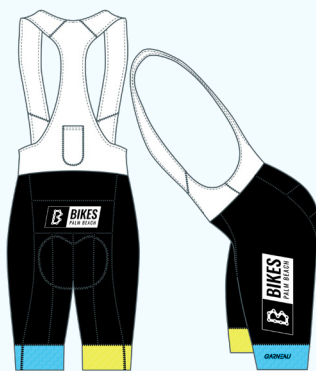
JUNIOR PREMIUM BIB



CHAMOIS HERO

GBOT0249 UNISEX
(JRXS-JRXL)

JUNIOR IMPROVED FIT



FABRIC

- POWER + LYCRA® FIBER
- PRO + LYCRA® FIBER • POWER MESH

FEATURES

- Power lycra base that offers great muscle support even after hours on the saddle.
- Power mesh straps.
- Seamless inner leg that reduces chafing.
- Flatlock seams to minimize friction and reduce chafing.
- Power band compressive cuff that reduces pressure and won't restrict blood flow.
- Hero chamois.
- Inseam: 7"/18cm.

JUNIOR PREMIUM SHORT



CHAMOIS HERO

GBOT0248 UNISEX
(JRXS-JRXL)

JUNIOR IMPROVED FIT



FABRIC

- POWER + LYCRA® FIBER
- PRO + LYCRA® FIBER • POWER MESH

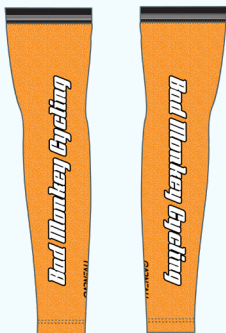
FEATURES

- Power lycra base that offers great muscle support even after hours on the saddle.
- Seamless inner leg that reduces chafing.
- Flatlock seams to minimize friction and reduce chafing.
- Power band compressive cuff that reduces pressure and won't restrict blood flow.
- Hero chamois.
- Inseam: 7"/18cm.

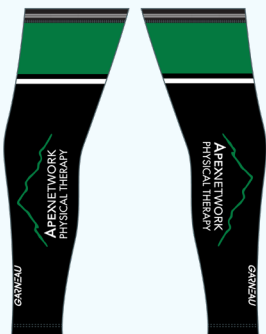




XTRAS

**ARM WARMERS****GSAC0078** (XS-XL)**FEATURES**

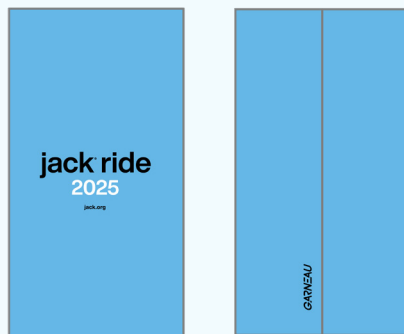
- Fabric : Thermo Stelvio.
- Silicone grippers at biceps.
- Flatlock seams to minimize friction and reduce chafing.

**LEG WARMERS****GSAC0079** (XS-XXL)**FEATURES**

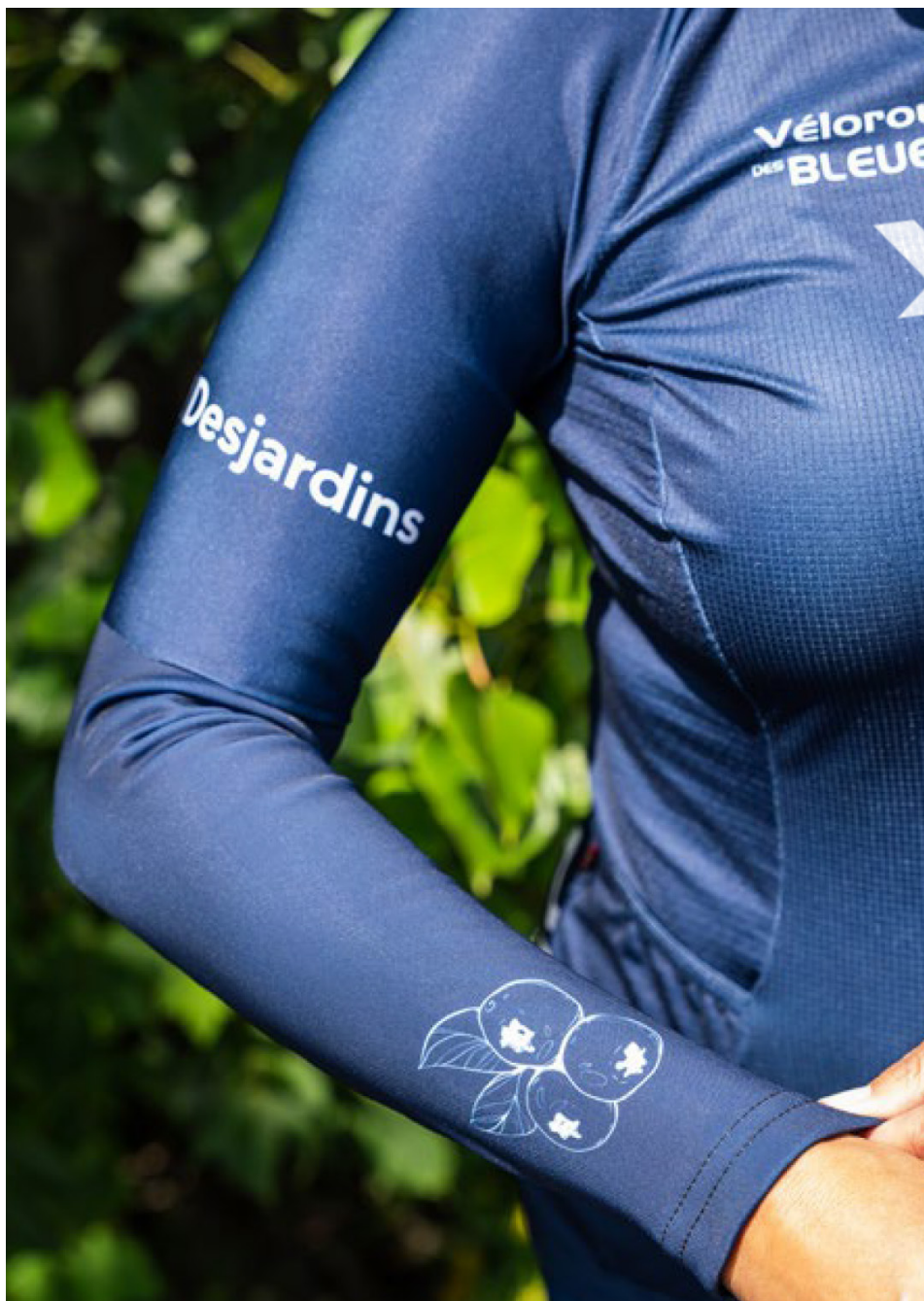
- Fabric : Thermo Stelvio.
- Silicone grippers at biceps.
- Flatlock seams to minimize friction and reduce chafing.

**SOCKS****GSOK0019** (S/M-L/XL)**FEATURES**

- 7" cuff.
- 86% polyester, 10% nylon, 4% LYCRA fiber.
- Reinforced heel and toes.

**NECK GAITER****GSAC0080** (OS)**FEATURES**

- Fabric : Thermasoft 180.
- Overlock seams.
- Unlimited ways to wear.





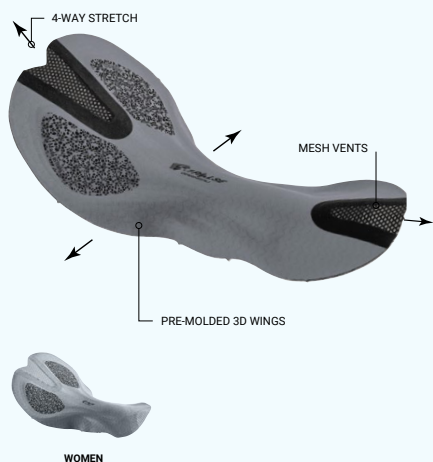
INFO



airgel MOTION

AIRZONE2

HERO

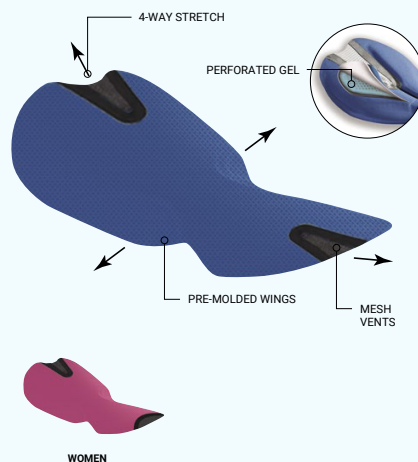


TOP SHEET

- The topsheet contains carbon fibers and has high-tech bacteriostatic properties.
- New breathable technical top sheet backing made with a mesh-like construction that opens and closes depending on the leg movement to draw moisture away from the body, leaving riders dry and fresh.

CONSTRUCTION

- The innovative 5.1 Pulse design combines 3D preshaped wings with skiving and vent perforation technologies.
- Skiving technology is used to combine very dense and lightweight foams in order to optimize the ergonomic shape and lightness. Skiving provides more thickness where needed and thinness at the edges, making the pad unnoticeable when pedaling.
- The deep slit at the back, bridged by vented mesh, allows for multidirectional motion and amazing comfort.
- The mesh area at the front adapts to the body for increased comfort and moisture wicking.
- Multi-thickness perforated high-density foam for better moisture evacuation and support.

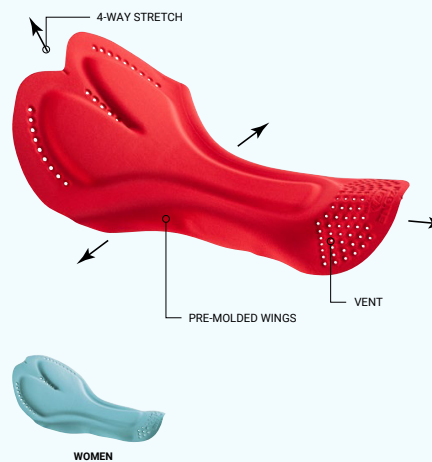


TOP SHEET

- Fabric treated with an antibacterial solution to fight the effects of retained moisture, which can increase the growth of bacteria.

CONSTRUCTION

- Perforated gel inserts at front and back offering comfort and breathability.
- Multi-thickness perforated foam for better moisture evacuation and support.
- Vent at the front helps maintain breathability.
- A deep slit at the back is bridged by vented mesh to allow for multidirectional motion and amazing comfort.

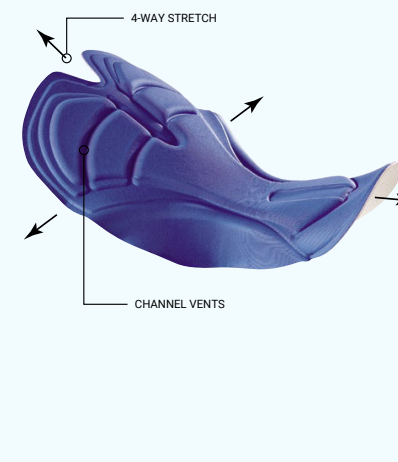


TOP SHEET

- Fabric treated with an antibacterial solution to fight the effects of retained moisture, which can increase the growth of bacteria.

CONSTRUCTION

- Developed with B.E.M. (Beveled Edge Molding) high-density perforated memory foam. This technology eliminates drastic drops of heights at the edge of the foam, resulting in a smooth transition without pinching points or chafing.
- Perforated vents maintain breathability without sacrificing comfort.
- The foam and fabric used for this chamois maximize moisture wicking.
- Chamois conforms ergonomically to the human body.
- Pre-molded wings with a progressive slope shape for a superior, ergonomic fit.
- 4-way stretch maximizes fit and motion.
- Seamless construction.
- Thinner perineal area relieves pressure (men only).

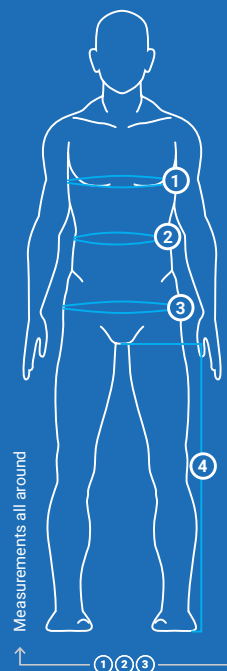


TOP SHEET

- Fabric treated with an antibacterial solution to fight the effects of retained moisture, which can increase the growth of bacteria.

CONSTRUCTION

- 4-way stretch premolded padding provides a better fit while riding.
- High-density foam for a better support.
- Seamless construction eliminates pinching points and chafing.



MEN'S SIZES CHART

BODY

| MEASUREMENTS | 2XS | XS | S | M | L | XL | 2XL | 3XL | 4XL |
|----------------------|-------------|-------------|-------------|-------------|-----------|-------------|-------------|-------------|-------------|
| | Inches | Inches | Inches | Inches | Inches | Inches | Inches | Inches | Inches |
| 1 CHEST MEASUREMENTS | 32 ¼ - 34 ¼ | 33 ¾ - 35 ¾ | 35 ¾ - 37 ¾ | 37 ¾ - 39 ¾ | 41 - 42 ¾ | 44 - 46 | 47 ½ - 49 ½ | 50 ½ - 52 ½ | 53 ½ - 55 ½ |
| 2 WAIST MEASUREMENTS | 26 ¾ - 28 ¾ | 28 - 30 | 29 ½ - 31 ½ | 31 ¾ - 33 ¾ | 35 - 37 | 38 - 40 | 41 ½ - 43 ½ | 44 ½ - 46 ½ | 47 ½ - 49 ½ |
| 3 HIPS MEASUREMENTS | 32 ¼ - 34 ¼ | 33 ¾ - 35 ¾ | 35 ¾ - 37 ¾ | 37 ¾ - 39 ¾ | 41 - 43 | 43 ¾ - 45 ¾ | 45 ½ - 47 ½ | 48 - 50 | 50 ½ - 52 ½ |
| 4 INSEAM | 30 ¼ | 30 ¼ | 30 ¾ | 31 ¾ | 32 ½ | 32 ½ | 32 ½ | 32 ½ | 32 ½ |

BODY

| MEASUREMENTS | 2XS | XS | S | M | L | XL | 2XL | 3XL | 4XL |
|----------------------|---------|---------|---------|----------|-----------|-----------|-----------|-----------|-----------|
| | CM | CM | CM | CM | CM | CM | CM | CM | CM |
| 1 CHEST MEASUREMENTS | 82 - 87 | 86 - 91 | 90 - 95 | 96 - 101 | 104 - 109 | 112 - 117 | 120 - 125 | 128 - 133 | 136 - 141 |
| 2 WAIST MEASUREMENTS | 67 - 72 | 71 - 76 | 75 - 80 | 81 - 86 | 89 - 94 | 97 - 102 | 105 - 110 | 113 - 118 | 121 - 126 |
| 3 HIPS MEASUREMENTS | 82 - 87 | 86 - 91 | 90 - 95 | 96 - 101 | 104 - 109 | 110 - 115 | 116 - 121 | 122 - 127 | 128 - 133 |
| 4 INSEAM | 77 | 77 | 78.5 | 81 | 83.5 | 83.5 | 83.5 | 83.5 | 83.5 |



SLIM
FIT

A form-fitting garment designed to provide aerodynamics in the cycling position. For a less compressive feel, choose one size up.



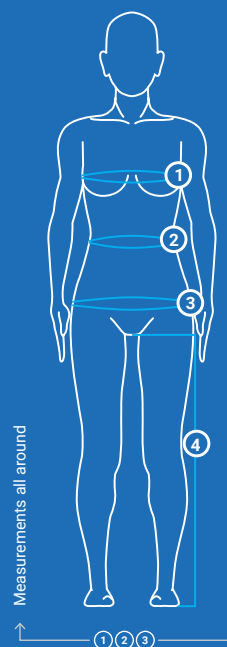
STANDARD
FIT

A garment with a close-fitting cut that doesn't compress.



RELAXED
FIT

A looser fit offering a relaxed look and great freedom of movement.



WOMEN'S SIZES CHART

BODY

| MEASUREMENTS | XS | S | M | L | XL | 2XL | 3XL | 4XL |
|----------------------|-------------|-------------|-------------|-------------|-------------|-------------|-------------|-------------|
| | Inches | Inches | Inches | Inches | Inches | Inches | Inches | Inches |
| 1 CHEST MEASUREMENTS | 31 - 33 | 32 ½ - 34 ½ | 35 - 37 | 37 ¾ - 39 ¾ | 40 ½ - 42 ½ | 43 ½ - 45 ½ | 46 ¾ - 48 ¾ | 50 - 52 |
| 2 WAIST MEASUREMENTS | 25 - 27 | 27 ¾ - 28 ¾ | 29 - 31 | 31 ½ - 33 ¾ | 34 ½ - 36 ½ | 37 ¾ - 39 ¾ | 41 - 43 | 44 - 46 |
| 3 HIPS MEASUREMENTS | 33 ¾ - 35 ¾ | 35 ¾ - 37 ¾ | 37 ¾ - 39 ¾ | 40 - 42 | 43 ¾ - 45 ¾ | 46 ¾ - 48 ¾ | 49 ½ - 51 ½ | 52 ¾ - 54 ¾ |
| 4 INSEAM | 29 ½ | 30 | 31 | 31 ¾ | 31 ¾ | 31 ¾ | 31 ¾ | 31 ¾ |

BODY

| MEASUREMENTS | XS | S | M | L | XL | 2XL | 3XL | 4XL |
|----------------------|---------|---------|----------|-----------|-----------|-----------|-----------|-----------|
| | CM | CM | CM | CM | CM | CM | CM | CM |
| 1 CHEST MEASUREMENTS | 79 - 84 | 83 - 88 | 89 - 94 | 95 - 100 | 103 - 108 | 111 - 116 | 119 - 124 | 127 - 132 |
| 2 WAIST MEASUREMENTS | 64 - 69 | 68 - 73 | 74 - 79 | 80 - 85 | 88 - 93 | 96 - 101 | 104 - 109 | 112 - 117 |
| 3 HIPS MEASUREMENTS | 86 - 91 | 90 - 95 | 96 - 101 | 102 - 107 | 110 - 115 | 118 - 123 | 126 - 131 | 134 - 139 |
| 4 INSEAM | 75 | 76.5 | 79 | 81.5 | 81.5 | 81.5 | 81.5 | 81.5 |



SLIM
FIT

A form-fitting garment designed to provide aerodynamics in the cycling position. For a less compressive feel, choose one size up.



STANDARD
FIT

A garment with a close-fitting cut that doesn't compress.



RELAXED
FIT

A looser fit offering a relaxed look and great freedom of movement.

*The hip measurement is taken at the fullest part of the hips. Measurements should be taken while wearing a sports bra.

GARNEAU ^C

custom-contact@garneau.com